



Safety instructions

Not following the safety precautions may cause injury to yourself or others. Strictly follow the safety precautions.



- Wear ear defenders.
- Wear safety glasses.
- Only use the tool for its intended use.
- This is not a toy. Never point it at people.
- Always assume that the tool is loaded.
- Never transport the tool with your finger on the trigger.
- Never place your hand over the nosepiece.
- When servicing, remove the fuel cell, battery and nails from the magazine.
- Warning: the contents of the fuel cell are flammable.
- The fuel cell is under pressure. Protect it from temperatures above 50°C (sunlight).
- Do not open, puncture or burn the fuel cell.
- Keep the fuel cell away from flames, sparks and heat. Do not spray near flames or incandescent objects.
- The fuel cell cannot be recharged. Do not attempt to fill or recycle it.
- Place empty fuel cells in the bio-bag and send to SPIT After-Sales Service.
- Keep tool, fuel cells and battery away from children.
- Only use the tool in well-ventilated areas. Store the fuel cells in a well-ventilated place.
- For reasons of safety and operation, it is imperative that only SPIT-compatible fuel cells and nails be used. SPIT does not license any other company to manufacture fuel cells and nails and can only guarantee the quality and performance of its own, genuine products. SPIT cannot accept responsibility for damage or injury caused by the use of third party fuel cells and nails which are not SPIT-compatible. **In particular, your product warranty will not cover damage to the Pulsa 700 caused by non-compatible parts.**
- Do not use the PULSA 700 in rainy or excessively humid conditions.

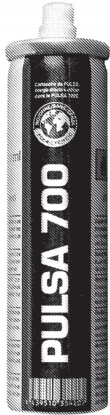
IMPORTANT INFORMATION ABOUT SAFETY REQUIREMENTS

The European Standard EN 792-13 has established certain safety requirements for hand-help non-electric fastener driving tools and it requires the respective instructions to be part of the tool operating manual. In your own interest, we urge you to follow such safety requirements without exception.

- SPIT Fastener driving tools operated by internal combustion shall only be used with dispensers for combustible gas which are listed in the SPIT operating instruction (Item 7.2.5a). For the SPIT Pulsa tool, this means the use of SPIT specified Pulsa Fuel Cells.
- Only those fasteners listed in the SPIT operating instruction may be used in the SPIT fastener driving tool (Item 7.2.1a). The fastener driving tool and the fastener listed in the operating instruction must be seen as one unit system in terms of safety.
- Only the fuel cells and lubricants listed in the SPIT operating instruction may be used (Item 7.2.1b).
- For the maintenance of SPIT fastener driving tools, only spare parts specified by the manufacturer or his authorized representative shall be used (Item 7.2.1e).

PULSA consumables

Fuel cell



The fuel cell must be used at temperatures between -5° and $+49^{\circ}\text{C}$. At the beginning of each cycle, a dose of gas is injected into the combustion chamber.



- The fuel cell has an internal reservoir and an external housing.
- In the internal reservoir, the fuel is kept under pressure by a propellant.
- When the fuel cell is empty, a small amount of propellant remains in the external chamber.
- For reasons of safety and operation of the unit, it is imperative that only genuine SPIT fuel cells and nails be used.

SPIT nails



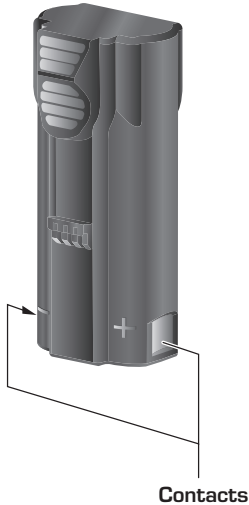
Only use SPIT nails with this tool

Consumables

Battery

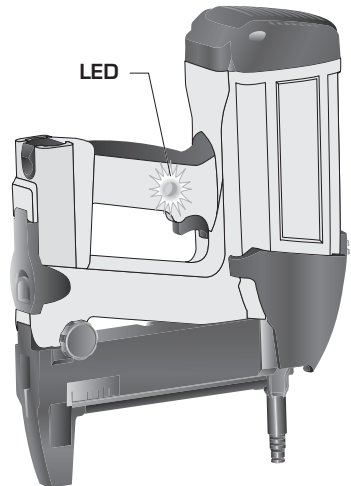
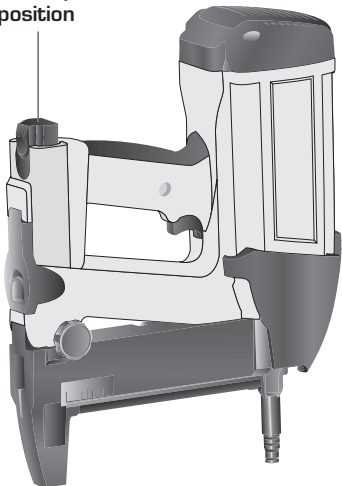


The battery will discharge itself even if the tool is not being used. Remove the battery when not in use or put in safe position. Recharge the battery if it has not been used for a long period of time.



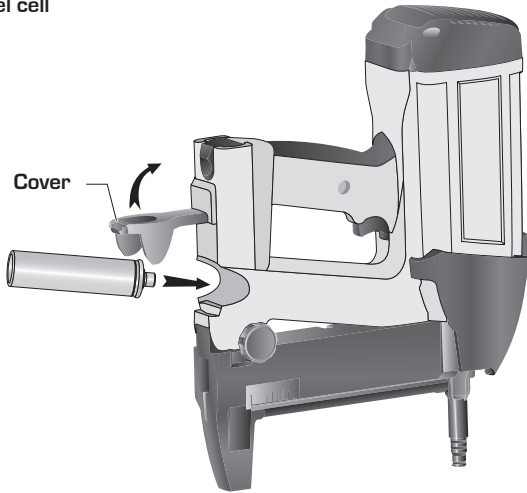
- Batteries are supplied uncharged. Fully charge them before using them for the first time. Only use SPIT batteries and battery chargers.
- Wait until the battery has completely drained before recharging it.
- When the battery has been charged (approx. 1 hour), insert it into the tool (contacts toward front).
- After use, remove the battery or place it in safe position (see drawing below).
- An LED control light is located on the right-hand side of the handle. After installing the battery: :
 - the indicator flashes green: the tool is powered by the battery
 - the indicator flashes red: recharge the battery.
 - the indicator is green the roller is pushed in, the fan is turning, the tool is ready to fire.
 - the indicator is red: the roller is pushed in, the fan is not turning, recharge the battery.

Battery in safe position



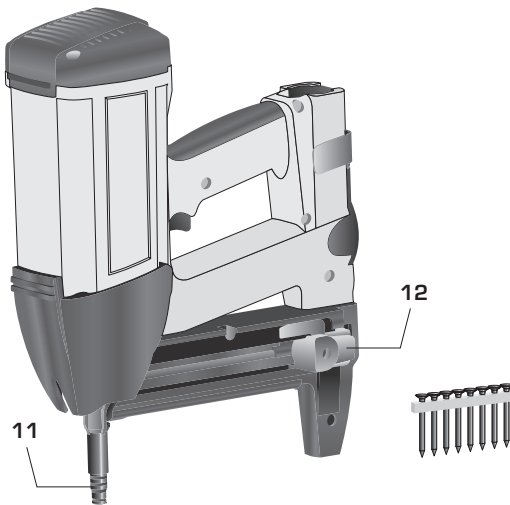
Installing the fuel cell and nails

Fuel cell



- Lift up the cover on the fuel cell slot.
- Insert the fuel cell and close the cover.

SPIT nails



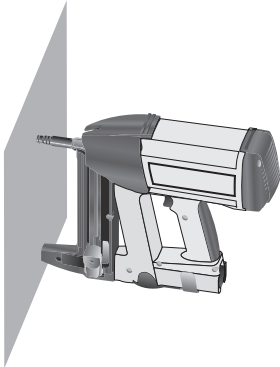
- Pull the button **(12)** back. Insert the nail strips into the back of the magazine. Release the button **(12)**,

Warning

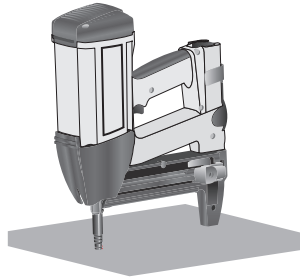
Do not press on the pin guide **(12)** while loading nails. The ejector push button **(12)** prevents you from using the tool when only three nails are left in the magazine.

Use

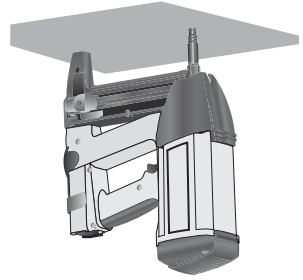
■ The PULSA 700 can be used in all positions:



Wall

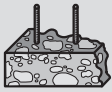


Floor



Ceiling

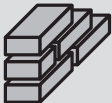
Suitable base materials:



Concrete / Pre-cast concrete



Rendered hollow block;
Hollow floor block



Solid / rendered brick



Steel



Carefully read the safety precautions on page 11 before use.

■ Place the pin guide against the base material

- the fan is on,
- the green light is not flashing,
- the gas is injected into the combustion chamber then mixed with air by the fan.

■ Pull the trigger

- the gas / air mixture burns,
- the fan keeps operating for approx 10 seconds

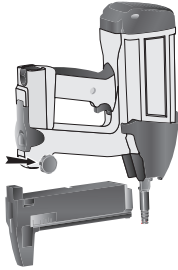


To avoid overheating, do not hold the device by the upper hood during use. This obstructs the filters.

■ When the cycle is over; the tool is ready for another sequence. When finished, remove the battery or place it in safe position.

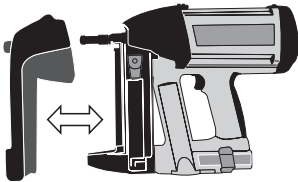
Use (cont.)

Using the PULSA 700E or 700P without the nail magazine.



- The nail magazine has to be removed for certain fastening operations.
- To do so, unscrew the knurled nut.

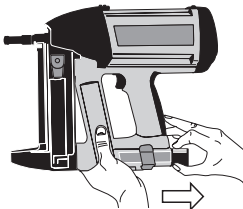
Using the cover



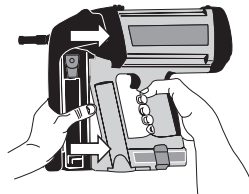
The tool is fitted with a cover which protects the tool and the magazine from dust and debris, in particular for overhead fixing.

To fit or remove the cover, please comply with the following instructions:

- Remove the battery before handling the tool.
- Proceed as indicated **(Fig. 1 to 3)**.



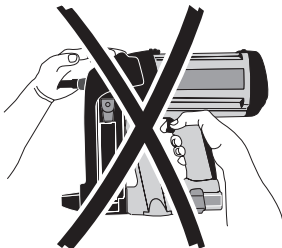
(Fig. 1)



(Fig. 2)



(Fig. 3)



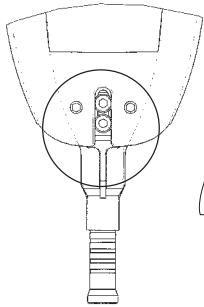
(Fig. 4)

- Never place your hand over the nosepiece **(Fig. 4)**.
- Except in special cases, we recommend that you do not remove the dust cover.

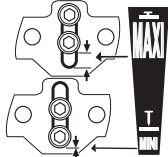
Adjusting the nail insertion depth

The tool automatically adjusts its power to suit the base material. However, certain applications may require a special setting for the tool pin guide.

Setting the pin guide :



(Fig. 1)



(Fig. 2)

- Loosen the screw using the hexagonal wrench supplied with the unit.

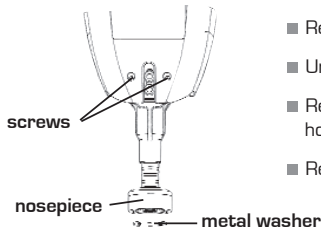
- With the wrench mounted onto the screws, slide :

- to the up position for maximum nail insertion (Fig. 1).
- to the down position for minimum nail insertion (Fig. 2).

Using the metal washer holder (700P)

Certain applications may require use of the metal washer holder (this accessory is not supplied with the unit).

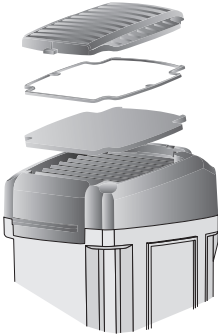
This washer is mounted instead of the standard pin guide.



- Remove the nail magazine (see drawing above).
- Unloosen the 2 screws by 3 to 4 turns.
- Replace the standard pin guide with the metal washer holder pin guide.
- Retighten the 2 screws.

Servicing / Troubleshooting

Servicing



For operations not included in this manual, consult the SPIT After-Sales Service.

- Servicing that can be performed by the user:
 - Cleaning of filters
 - Inspection of fuel cell
 - Inspection of battery charger contacts
- Cleaning of filters:
 - Remove the cover; remove the filters and lightly tap them to remove any dust.
 - After cleaning, replace them and close the cover.
- Cleaning of battery contacts:
 - Periodically clean these contacts with a dry cloth.

Malfunctions

If the recommendations do not solve the problem, contact the nearest SPIT After-Sales Service.

Troubleshooting

Causes / Solutions

<ul style="list-style-type: none"> ■ The tool does not work <ul style="list-style-type: none"> • the light is off • the light flashes red • the light flashes green 	<ul style="list-style-type: none"> - Battery not in nailer. Dirty battery contacts. Clean. - Battery completely discharged. Recharge battery. - Check that there are more than three nails in the magazine.
<ul style="list-style-type: none"> ■ The fan is on but the tool does not discharge <ul style="list-style-type: none"> • the light is red • the light is green 	<ul style="list-style-type: none"> - Battery power too low. Recharge the battery. - Change the fuel cell.
<ul style="list-style-type: none"> ■ The fan stops after pulling the trigger <ul style="list-style-type: none"> • the light is green 	<ul style="list-style-type: none"> - Contact SPIT After-Sales Service.
<ul style="list-style-type: none"> ■ The tool discharges with interruptions <ul style="list-style-type: none"> • the light is green 	<ul style="list-style-type: none"> - Change the fuel cell.
<ul style="list-style-type: none"> ■ Insufficient nail penetration <ul style="list-style-type: none"> • the light is green 	<ul style="list-style-type: none"> - Change the fuel cell. Clean filters.
<ul style="list-style-type: none"> ■ The tool makes a muffled sound. The piston does not drive the nails <ul style="list-style-type: none"> • the light is green 	<ul style="list-style-type: none"> - Contact SPIT After-Sales Service.
<ul style="list-style-type: none"> ■ The tool works slowly and heats over <ul style="list-style-type: none"> • the light is green 	<ul style="list-style-type: none"> - Check and clean the filter.
<ul style="list-style-type: none"> ■ Use in cold weather below -5°C 	<ul style="list-style-type: none"> - Place the tool, fuel cells and battery in a warm place.